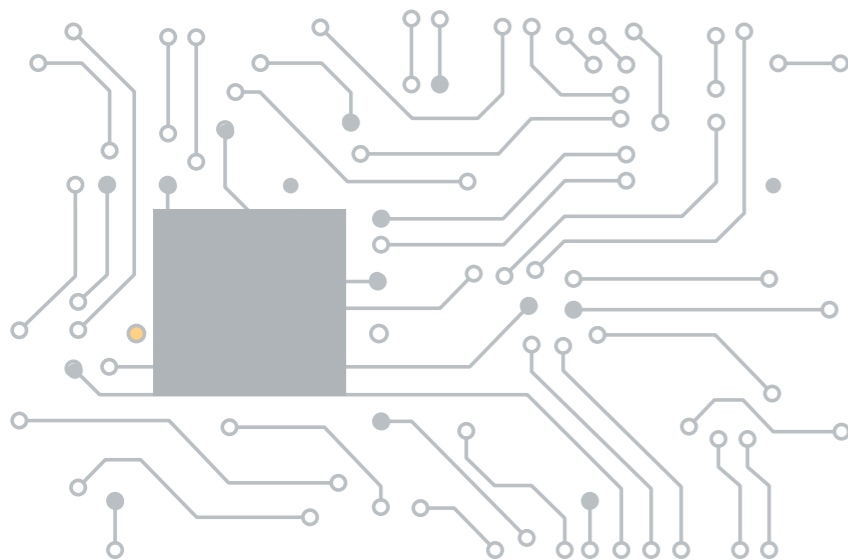


DAVIEW STANDALONE SOFTWARE



DATASHEET



Our systems need a **powerful CPU** and a **fast memory**.

The minimum memory requirement is 2133 MT/s and we always use two memory banks to speed up access.

We use **PassMarks®** - a reliable benchmark for checking the processing power of most CPUs on the market - when deciding which CPU to use (www.cpubenchmark.net).

Compatible with:

- Windows Embedded 8 64 bits
- Windows 8.1 Pro 64 bits
- Windows 10 Enterprise 2016 LTSB 64 bits
- Windows 10 Pro 64 bits
- Windows 10 Enterprise 64 bits
- Windows Server 2012 64 bits
- Windows Server 2016 64 bits



stackable

	DAVIEW S	DAVIEW LR
Intruder	●	●
Vehicles	●	●
Entry / exit	●	●
Tampering	●	●
Loitering	●	●
Appearance / disappearance	●	●
Virtual Onvif	●	●
Combination of rules	●	●
Integration with VMS, CMS and PSIM	●	●
HR High resolution analysis		●
Smart PTZ		●
Virtual IR for thermal cameras		●
Stabiliser for adverse conditions		●
Anti-dead zone corridor view		●
Distance thermal camera	235 m / 257 yd	505 m / 552 yd
Distance day/night camera	67 m / 73 yd	120 m / 131 yd

RANGE TABLES

Thermal cameras

DAVIEW S

f (mm)	Pixel pitch (µm)	Sensor (px)	HFOV (o)	Blind distance (m/yd)	Distance (m/yd)
9	17	640 x 480	62°	3/3	65/71
10	17	640 x 480	57°	3/3	70/77
13	17	400 x 300	29°	8/9	100/109
13	17	640 x 480	45°	5/5	110/120
15	17	640 x 512	40°	6/7	125/137
19	17	400 x 300	20°	12/13	140/153
19	17	640 x 480	32°	8/9	145/159
25	17	400 x 300	15°	16/17	175/191
25	17	640 x 480	25°	10/11	180/197
25	17	640 x 512	25°	10/11	185/202
35	17	400 x 300	11°	23/25	235/257
35	17	640 x 480	18°	15/16	240/262

DAVIEW LR

19	17	400 x 300	20°	12/13	195/213
19	17	640 x 480	32°	8/9	205/224
25	17	400 x 300	15°	16/17	245/268
25	17	640 x 512	25°	10/11	255/279
35	17	640 x 480	18°	15/16	335/366
50	17	640 x 512	12°	19/21	445/487
60	17	640 x 480	10°	23/25	505/552

Day/night cameras

DAVIEW S

	f (mm)	Height (m/ft)	Sensor	HFOV (o)	Blind distance (m/yd)	Distance (m/yd)
Standard view	3	4/13	(1/3)"	77°	2/2	32/35
Standard view	8	4/13	(1/3)"	33°	8/9	67/73

DAVIEW LR

Standard view	15	4/13	(1/3)"	18°	1/1	120/131
Corridor view	15	4/13	(1/3)"	14°	12/13	120/131

Camera installed 4 metres / 4 yd above ground level. The maximum range obtained is the ratio of 1.8-metre / 6 ft person standing at the top of the image. Distances are reduced in adverse weather conditions. The thermal difference required is 2°C. The minimum observation of the person is 2 seconds, recommended 5 seconds. HFOV means horizontal field of view.

SYSTEM REQUIREMENTS

Processing and Memory Requirements of the Daview Licence

DAVIEW S



According to these numbers, to operate **10 Daview S and 5 Daview LR the system** needs a CPU with at least **10 x 750 + 5 x 1.500 = 15.000 PassMarks®** is required (for example, an intel core i7 - 8700 @ 3.20GHz) and **10 x 1 Gb + 5 x 2Gb = 20 Gb of memories** (rounded up to 32 Gb).

DAVIEW LR



In case of too many licences, more than one server is required. This is not a problem, since the system allows equipment stacking to **create a single virtual analysis server** (except for the Daview Mini system).

In the above example, we would use 2 servers with a CPU of **7,500 PassMarks®** and **10 Gb** of memory in each.

OPCIONAL

Relay outputs	REL4I, REL8I internal relay outputs N/C. 5amps at 12V DC REL12I, REL16I internal relay outputs N/C. 5amps at 12V DC
Supervision kit	19" monitor (VGA), keyboard and mouse (USB)
Daview AMS	Alarm Management System for VMS, CMS and PSIM with ClickThru™ technology

DAVANTIS TECHNOLOGIES SL | Barcelona · Spain | Madrid · Spain |
Nice · France | Luedinghausen · Germany | Bogota · Colombia | Singapore

DAVANTIS TECHNOLOGIES INC | Washington DC · USA

info@davantis.com
www.davantis.com

