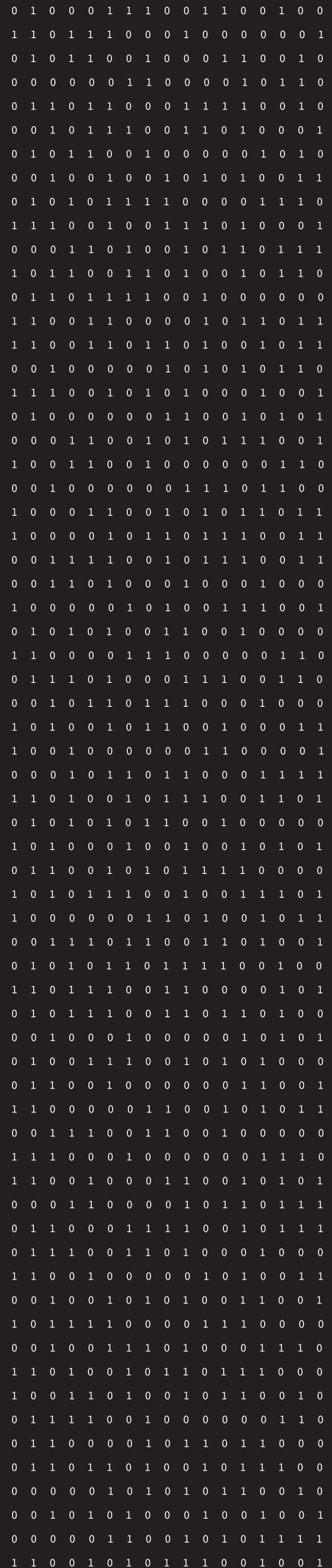
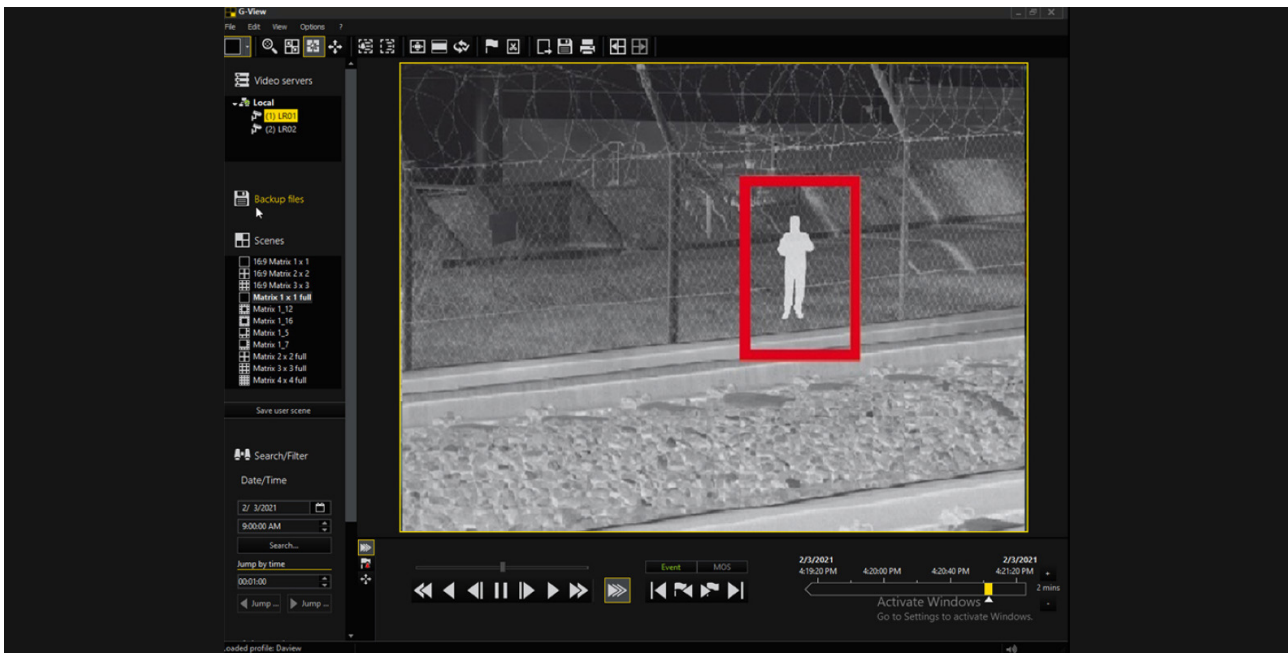


# Integration DAVANTIS - Geutebrück G-Core



# Receive DAVANTIS video analytics events in your Geutebrück G-Core —



**DAVANTIS** is 100% devoted to video analytics for perimeter security. Over 15 years investigating beyond the obvious, using powerful and state-of-the-art algorithms to boost your cameras.

**Geutebrück** is an expert in video management solutions. Their cutting-edge systems ensure that your company is protected against the damage that could be caused by unauthorised activity. In the field of efficiency their products also help you to optimise your

internal processes. Geutebrück G-Core manages video images and is the base for an optimally customizable complete solution.

Now you can receive DAVANTIS video analytics events in your Geutebrück G-Core.

---

## Technical specifications

### Geutebrück G-Core

DAVANTIS intruder alarms.  
DAVANTIS technical alarms.  
Access to live camera and recorded video retrieval.

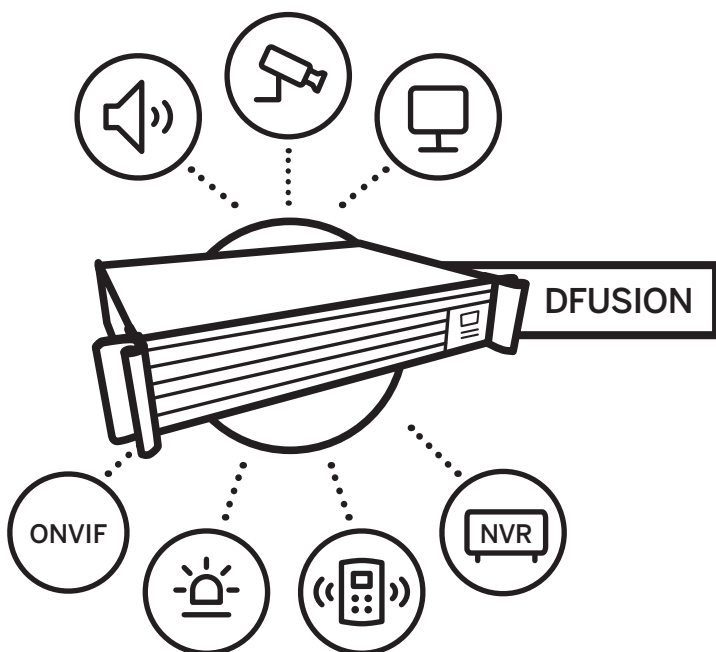
### Requirements

**Geutebrück:** Geutebrück G-Core 5.1.0.169 or higher.  
**DAVANTIS:** v191 or higher.

# Total freedom to design the best CCTV installation —

## Beyond Deep Learning

DFUSION combines our market-leading videoanalytics, with the most advanced Deep Learning technology.



Proprietary technology, compatible with third party systems



### Real time alarm verification

Quick, easy and reliable alarm verification to react within seconds.



Click 1 Alarm



Click 2 Video Clip



Click 3 Live camera

# How do you connect DAVANTIS with Geutebrück G-Core

